

MADE IN NEW ZEALAND

DELIVERED NATIONWIDE



THE TOROA XL

Specifications Sheet

WHANGĀREI / MOTUEKA



TABLE OF CONTENTS

01	Layout
02	Materials
03	Customisation
04	Features
05	Client Journey
06	Our Single-Storey Designs
07	Our Double-Storey Designs
08	Contact





THE TOROA XL LAYOUT

**DOUBLE-STOREY, THREE-BEDROOM
TINY HOME ON WHEELS.**

NZD \$239,000



Size

On a 12x3m platform, the Toroa XL boasts 60m² floorspace.

Rooms

The double storey Toroa XL features three bedrooms or 2 bedrooms + extra space, your choice of dining & kitchen layout (see plans below) and a large bathroom with ample storage space.

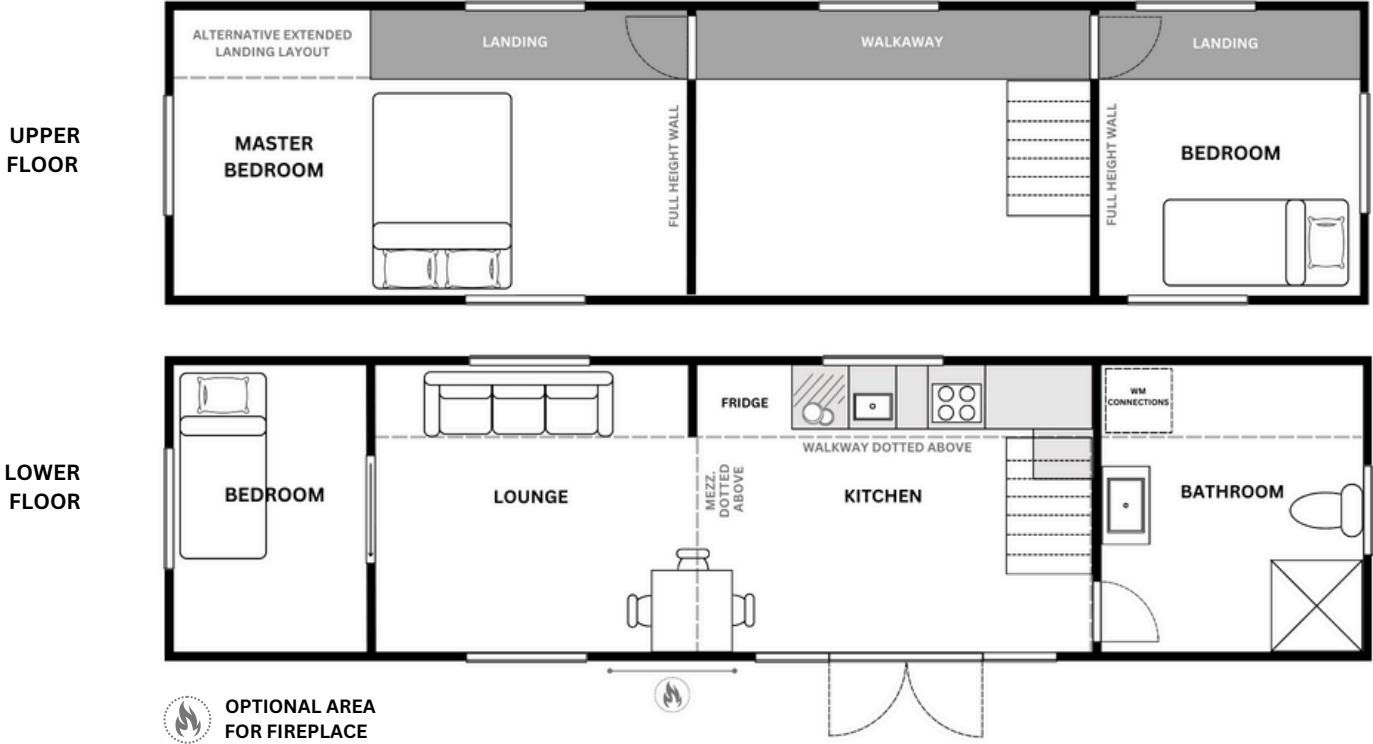
THERE ARE FOUR ALTERNATIVE LAYOUTS FOR THE TOROA XL.



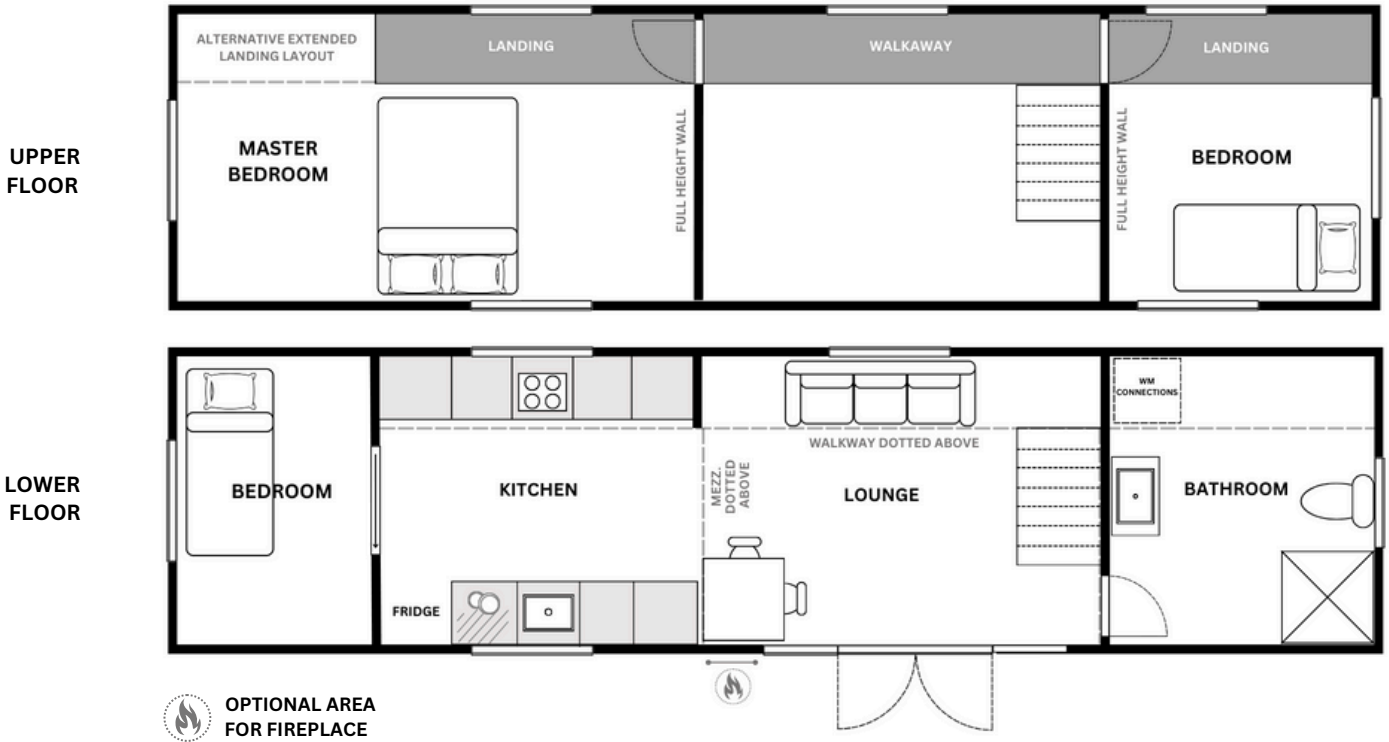
**Unit is independently valued at \$250,000
Valuation provided by "Auto Valuations NZ"*

THE TOROA XL - LAYOUTS

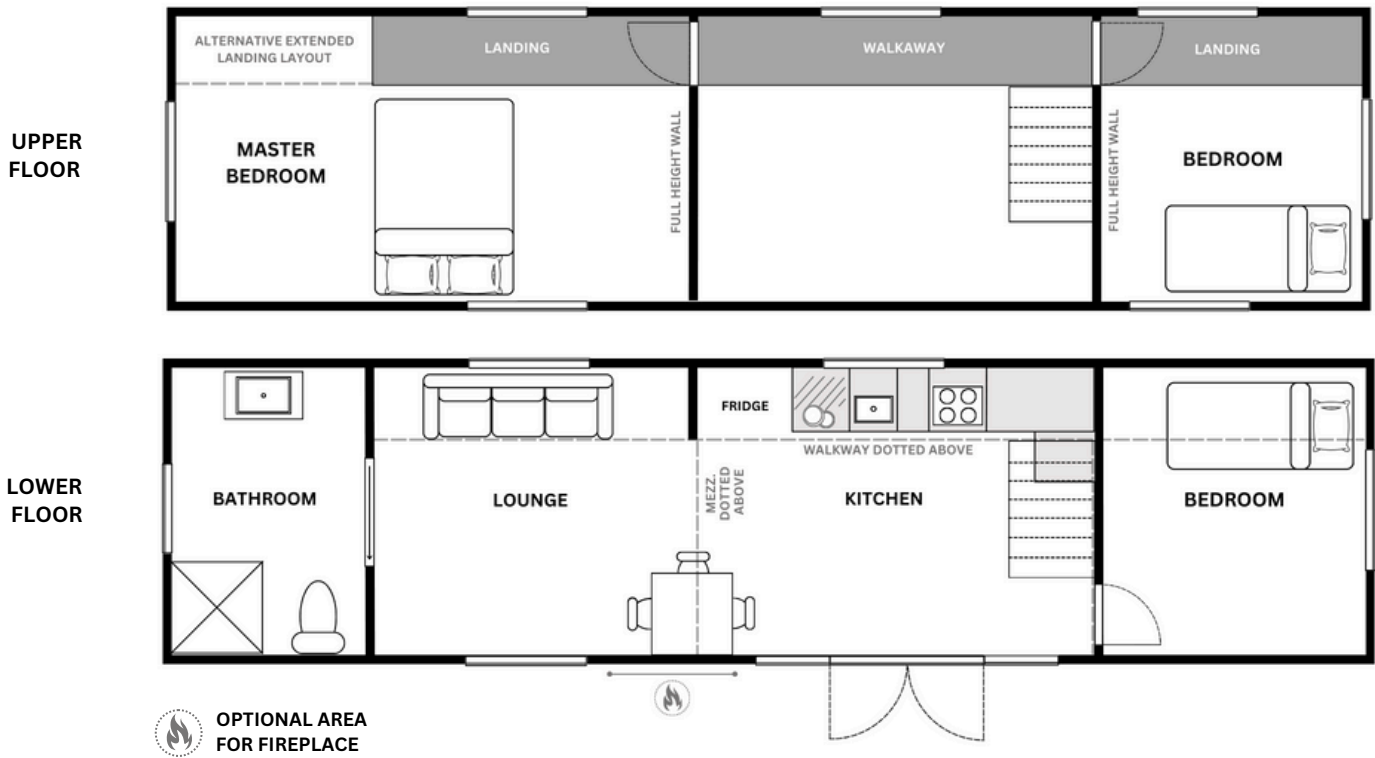
LAYOUT 1: BEDROOM - LOUNGE - KITCHEN - BATHROOM



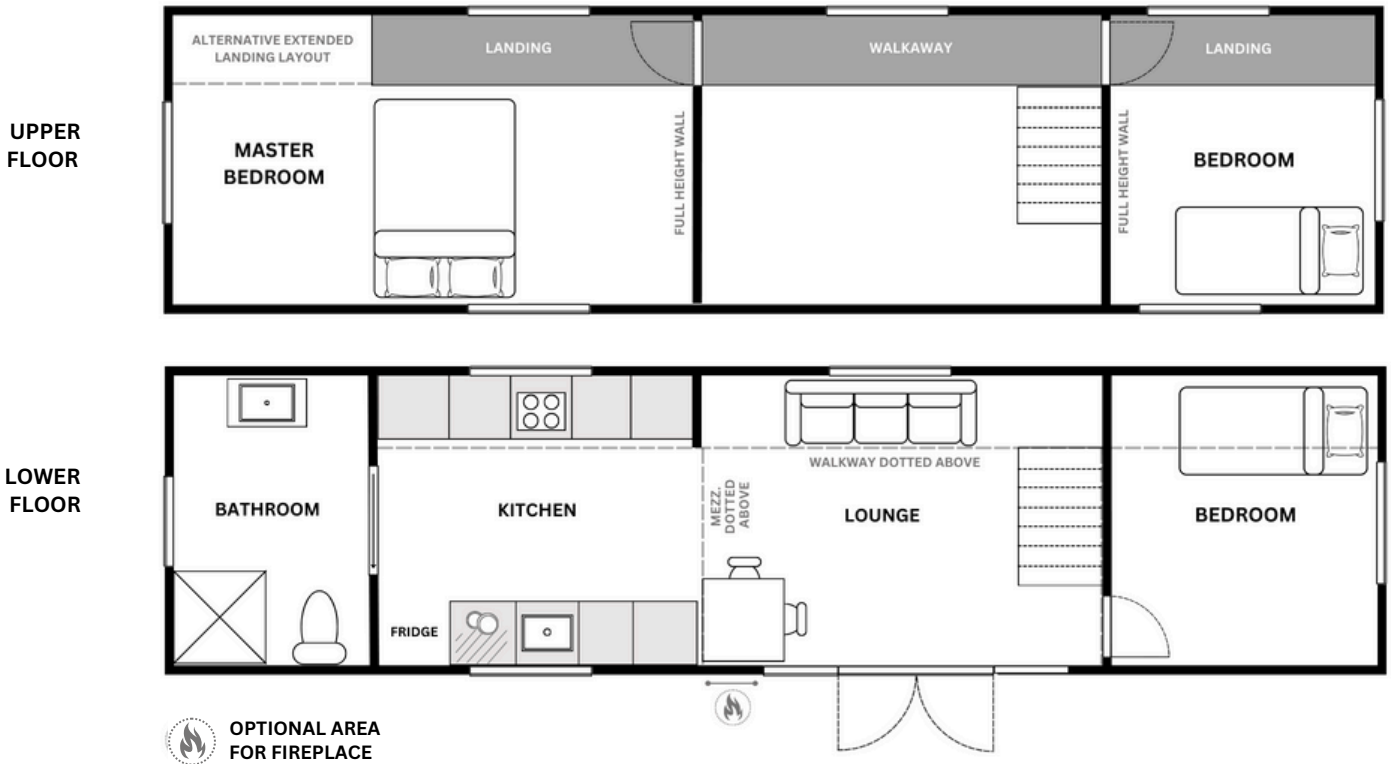
LAYOUT 2: BEDROOM - KITCHEN - LOUNGE - BATHROOM



LAYOUT 3: BATHROOM - LOUNGE - KITCHEN - BEDROOM



LAYOUT 4: BATHROOM - KITCHEN - LOUNGE - BEDROOM



MATERIALS

STANDARD SPECS

Framing

All Ruru Tiny Homes are created using local materials (where possible), in a sustainable manner. Our frames are made from H1.2 treated timber and created specifically for each unit.

Cladding

Using superior AlpineClad, our units benefit from additional thermal qualities whilst providing a durable exterior surface.

Sub floor

On top of the platform sits 20mm strandfloor, which is tough and durable.

Insulation

All of our designs features three types of insulation. EarthWool R2.4 in the walls, 75mm Polyisocyanurate (PIR) R4 in the roof and Expol 60mm R1.8 polystyrene underfloor.

Glazing

Windows and doors are aluminium framed and double-glazed with an Ironsand finish. The windows and doors are locally manufactured in New Zealand.

Lighting

All of our models incorporate recessed LED lighting throughout the unit.

Roof & Trim

All Ruru Tiny Homes feature SIP structural roofing panels, guttering, downpipes and trim all finished in Ironsand.

Paint

The walls are painted with low VOC paint.



* Upgrades, changes or customisations will affect cost of the unit.

CUSTOMISATION

Interior lining

All Ruru Tiny Homes are created using New Zealand made building materials. Clients can choose from white grooved ply or birchwood ply lining with black negative detailing. If you have special ideas about your lining - talk to us, we're very creative!

Flooring

Our local flooring supplier will install a vinyl tile or plank in a finish of your choosing. We also have a range of carpets on offer and if you want something custom, like Italian marble, please let us know - we're happy to quote any other flooring materials too!

Stairs

Choose from stairs or storage stairs to reach the second storey. Custom stair design is available upon request, please note this might be supplied by a third party joinery depending on the detail you wish for your stairs.

Kitchen

The kitchen features a wooden benchtop (acacia or bamboo), a four burner gas stove, electric inbuilt oven and a full size dishwasher. Upgrades to gas ovens, or changes in appliances are available also. Talk to us about your ideas and we'll make them reality. Fridges are excluded from standard pricing.

Bathroom

The bathroom includes a full size 900mm x 900mm shower, 600mm vanity and space for a toilet of your choice. Because of the differences in needs and costs we do not include toilet systems in our standard pricing.

Toilet

With numerous options for toileting. Please enquire for install costs, we can quote and install any system of your choice.

Heating

Quotations for heat pumps are available upon request. Please confirm before build starts to ensure pipework can be installed into the walls. There are heatpumps available for on grid and off grid use, please ask for questions. Fireplaces of any kind can be installed after delivery at your location by your local gas fitter, we're happy to recommend options.



* Upgrades, changes or customisations will affect cost of the unit.

FEATURES

Connections

All models include an easy 3 pin caravan plug connection point for a mains power supply or solar system hook up. 2x fresh water inlets to connect either end of the unit. All homes feature a continuous flow gas califont, 2 x double exterior power socket for filters and pumps, monoxide detector and smoke alarm.

Transportation

We deal with numerous transport companies across the country who offer secure, insured delivery. Costs depend on the route taken, distance travelled and site accessibility. Please contact us for transportation referrals.

Warranty

All Ruru Tiny Homes are built with code compliant materials, all warranties of products will be transferred to the new owner on handover. Ruru Tiny Homes also come with a 3 year warranty on workmanship.

Certification

An electrical warrant of fitness and gas certification will be provided upon completion of your build.

New Zealand made

All Ruru Tiny Homes are created completely on site. Using building materials predominantly NZ Made. We focus on working with local contractors and local suppliers.



CLIENT JOURNEY

INTRODUCTION

Take a look around our website and consider any questions you may have. Book a viewing, to check out our tiny home designs. We offer one on one consultations so we can answer all your questions and focus on your tiny home needs.

COMMITMENT

Once you've joined the Ruru family, we get together and go over all the paperwork. We determine your tiny home specifications and customisation preferences. Then we will sign the contracts and once the deposit is paid, your unit is underway!

DESIGN + BUILD

During the build, we provide clients with weekly updates of their building progress. Visits are available by appointment. The client liaison team is available all week for questions, orders, extras or simply to catch up over a cuppa.

BUILD + FINISH

During the build you will receive visual updates on each stage of your tiny's progress. From framing to fit-out and finishing. After the approximate 9 week build, and post-build professional clean, clients come in for an official handover.

DELIVERY

Delivery to site is scheduled through a third party transport company. Our team can liaise with your chosen transport provider and will assist with loading your home at our worksite.

AFTERCARE

Your Ruru journey does not end with the delivery. You will receive an aftercare manual with all your paperwork, warranties and certifications. Once your home is on site the team at Ruru Tiny Homes are only a phone call away.

SINGLE STOREY DESIGNS

WHIO - 2 BEDROOMS

The Whio is a single-storey, two-bedroom home on a 14x4m platform. Both rooms can accommodate queen sized beds and have separate entrances. Offering a spacious, open-plan living and kitchen area which features breakfast bar and plenty of storage, and a full bathroom, the Whio has a ceiling height of 2700mm. This home offers a total footprint of 56m².

\$249,000

KIWI - 1 BEDROOM

The Kiwi is a single-storey, one-bedroom home on a 12x3m platform. It offers a generous living area, bathroom, galley kitchen and a full size bedroom. Two large French doors and one ranch slider positioned in the living area fill the space with light maximising the indoor-outdoor flow. The Kiwi has a ceiling height of 2700mm. This home offers a total footprint of 36m².

\$193,000

LITTLE RURU - 1 BEDROOM

The Little Ruru is a single-storey, one-bedroom home on a 12x3m platform. Offering a central bathroom linking the bedroom and kitchen/living area together, the Little Ruru has a ceiling height of 2700mm. This home offers a total footprint of 36m².

\$193,000

PIWAKAWAKA - 1 BEDROOM

The Piwakawaka is a single-storey, one-bedroom home on an 8x3m platform. It offers an open-plan layout with a separate bathroom, maximising space with a smaller footprint. The Piwakawaka has a ceiling height of 2700mm. This home has a total footprint of 24m².

\$143,000

DOUBLE STOREY DESIGNS

MOA - 4 BEDROOMS

The Moa is a double-storey, four-bedroom tiny home on a 12x3m platform. Offering a full bathroom, open living-dining area, a full kitchen, and four upstairs bedrooms, the Moa has ceiling heights of 2100mm downstairs. This home offers a total footprint of 70m².

\$249,000

TOROA XL - 3 BEDROOMS

The Toroa XL is a double-storey, three-bedroom home on a 12x3m platform. It features a central walkway that connects the two upstairs bedrooms, alongside one downstairs bedroom. The Toroa XL boasts ceiling heights of 2100mm downstairs and 1900mm on the walkway. With four layouts to choose from, each including a full bathroom, full kitchen, and living space, this model offers a total footprint of 60m².

\$239,000

TOROA - 2 BEDROOMS

The Toroa is a double-storey, two-bedroom home on a 10x3m platform. It features a central walkway that connects the two upstairs bedrooms, a full bathroom, a full kitchen, and a living space. The Toroa has ceiling heights of 2100mm downstairs and 1900mm on the walkway. This home offers a total footprint of 49.5m².

\$215,000

TOROA XS - 2 BEDROOMS

The Toroa XS is a double-storey, two-bedroom home on an 8x3m platform. It features a central walkway that connects the two upstairs bedrooms, a full bathroom, a full kitchen placed under the walkway, and a living space. The Toroa XS has ceiling heights of 2100mm downstairs and 1900mm on the walkway. This home offers a total footprint of 39m².

\$167,000

KĀKĀ - 2 BEDROOMS

The Kākā is a two-bedroom tiny home boasting a downstairs bedroom, a spacious upstairs mezzanine, a wide hallway, a bathroom with a sliding door, and a generous lounge-kitchen area. Available in two sizes, 10x3m/43.5m² or 12x3m/50m², this home offers flexibility. Additionally, the kitchen location can be customised to suit your preference, either under the stairs or at the end of the wall.

\$215,000 / \$223,000

*We also offer custom designs upon request.



WHANGĀREI

ruru
tiny homes

MOTUEKA

LET'S GET IN TOUCH

Please don't hesitate to call or email us whenever you need assistance.
Your team at Ruru Tiny Homes is always available for you!

021 190 4155

hello@rurutinyhomes.nz

Whangārei: 112-114 Port Road (Access off Fertilizer Road) Port Whangārei.

Motueka: 54 Green Lane.

WWW.RURUTINYHOMES.NZ