

MADE IN NEW ZEALAND

DELIVERED NATIONWIDE



BROCHURE

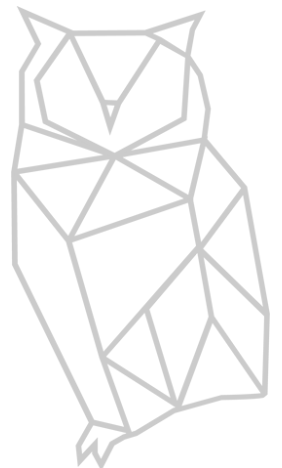
RURU TINY HOMES

WHANGĀREI / MOTUEKA



TABLE OF CONTENTS

01	About Us
02	Our Designs
03	Standard Specifications
04	Customisation
05	Features
06	The Toroa XL - 3 Bedrooms
07	The Toroa - 2 Bedrooms
08	The Toroa XS - 2 Bedrooms
09	The Kākā - 2 Bedrooms
10	The Kiwi - 1 Bedroom
11	The Little Ruru - 1 Bedroom
12	The Piwakawaka - 1 Bedroom
13	Client Journey
14	Contact



ABOUT US

Before starting Ruru Tiny Homes, Fran and Daniel Huelsmeyer were eco lodge owners, catering to international tourists from a popular sunny spot in Nelson. But when the pandemic came to New Zealand in 2020, tourism was hit hard, and their lodge was instantly affected. In an effort to redirect their business, Ruru Tiny Homes was created. Alongside a skilled carpenter, they started building tiny homes in their backyard, which sold instantly to keen buyers even prior to completion.

Two years later, Ruru Tiny Homes spans across New Zealand, with branches in Whangārei and Motueka, employing 50+ staff, whilst supporting local businesses and suppliers. Keeping up with high demand, the business continues to grow. Delivering high quality, sustainable, large scale tiny homes on wheels, nationwide.

At Ruru Tiny Homes sustainability and ethics sit high on the agenda. "We create homes on a tiny footprint, not tiny homes." is a common statement heard across the yard. This is achieved by sourcing materials locally, minimising waste and ensuring the tiny homes are designed and engineered to withstand the New Zealand climate.

An emphasis on quality craftsmanship ensures that tiny homes are built with care and pride. "Our team is made up of skilled, qualified carpenters who are passionate about what they do." The team gets paid an ethical living wage and works reasonable hours. "We're working towards a common goal in the community, the creation of good jobs, homes and greater living opportunities for all.

The client experience is equally important, with excellent customer service marking the client journey from start to finish. "The client is involved and informed every step of the way, from one-on-one consultations to instant access to our team. This is their project and we are helping them navigate it with our expertise and care".



OUR DESIGNS

DOUBLE STOREY MODELS

TOROA XS

Two Bedrooms / \$167,000

The Toroa XS is a double-storey two-bedroom home on an 8x3m platform. Offering a central walkway linking the two bedrooms together, the Toroa XS has ceiling heights of 2100mm downstairs and 1900mm on the walkway. This home offers a total footprint of 39m².

TOROA

Two Bedrooms / \$215,000

The Toroa is a double storey two bedroom home on a 10x3m platform. Offering a central walkway linking the two bedrooms together, the Toroa has ceiling heights of 2100mm downstairs and 1900mm on the walkway. This home offers a total footprint of 49.5m².

TOROA XL

Three Bedrooms / \$239,000

The Toroa XL is a double-storey three-bedroom home on a 12x3m platform. Offering a central walkway linking the two upstairs bedrooms together, the Toroa XL has ceiling heights of 2100mm downstairs and 1900mm on the walkway. With four layouts available, this model offers a total footprint of 60m².

KĀKĀ

Two Bedrooms / \$215,000 / \$223,000

The Kākā is a two-bedroom tiny home boasting a downstairs bedroom, a spacious upstairs mezzanine, a wide hallway, a bathroom with a sliding door, and a generous lounge-kitchen area. Available in two sizes, 10x3m/43.5m² or 12x3m/50m², this home offers flexibility. Additionally, the kitchen location can be customised to suit your preference, either under the stairs or at the end of the wall.



OUR DESIGNS

SINGLE STOREY MODELS

KIWI

One Bedroom / \$193,000

The Kiwi is a single storey, one bedroom home on a 12x3m platform. Offering a generous living area, bathroom, galley kitchen and full size bedroom. Two large french doors and one ranch slider positioned in the living area fill the space with light maximising the indoor - outdoor flow. The Kiwi has a ceiling height of 2700mm. This home offers a total footprint of 36m².

LITTLE RURU

One Bedroom / \$193,000

The Little Ruru is a single storey one bedroom home on a 12x3m platform. Offering a central bathroom linking the bedroom and kitchen / living area together, the Little Ruru has a ceiling height of 2700mm. This home offers a total footprint of 36m².

PIWAKAWAKA

One Bedroom / \$143,000

The Piwakawaka is a single storey, one bedroom home on a 8x3m platform. It offers an open-plan layout with a separate bathroom, maximising space with a smaller footprint. The Piwakawaka has a ceiling height of 2700mm. This home has a total footprint of 24m².



STANDARD SPECS

MATERIALS

Framing

All Ruru Tiny Homes are created using local materials (where possible), in a sustainable manner. Our frames are made from H1.2 treated timber and created specifically for each unit.

Cladding

Using superior AlpineClad, our units benefit from additional thermal qualities whilst providing a durable exterior surface.

Sub floor

On top of the platform sits 20mm strandfloor, which is tough and durable.

Insulation

All of our designs features three types of insulation. EarthWool R2.4 in the walls, 75mm Polyisocyanurate (PIR) R4 in the roof and Expol 60mm R1.8 polystyrene underfloor.

Glazing

Windows and doors are aluminium framed and double-glazed with an Ironsand finish. The windows and doors are locally manufactured in New Zealand.

Lighting

All of our models incorporate recessed LED lighting throughout the unit.

Roof & Trim

All Ruru Tiny Homes feature SIP structural roofing panels, guttering, downpipes and trim all finished in Ironsand.

Paint

The walls are painted with low VOC paint.



* Upgrades, changes or customisations will affect cost of the unit.

CUSTOMISATION

Interior lining

All Ruru Tiny Homes are created using New Zealand made building materials. Clients can choose from white grooved ply or birchwood ply lining with black negative detailing. If you have special ideas about your lining - talk to us, we're very creative!

Flooring

Our local flooring supplier will install a vinyl tile or plank in a finish of your choosing. We also have a range of carpets on offer and if you want something custom, like Italian marble, please let us know - we're happy to quote any other flooring materials too!

Stairs

Choose from stairs or storage stairs to reach the second storey. Custom stair design is available upon request, please note this might be supplied by a third party joinery depending on the detail you wish for your stairs.

Kitchen

The kitchen features a wooden benchtop (acacia or bamboo), a four burner gas stove, electric inbuilt oven and a full size dishwasher. Upgrades to gas ovens, or changes in appliances are available also. Talk to us about your ideas and we'll make them reality. Fridges are excluded from standard pricing.

Bathroom

The bathroom includes a full size 900mm x 900mm shower, 600mm vanity and space for a toilet of your choice. Because of the differences in needs and costs we do not include toilet systems in our standard pricing.

Toilet

With numerous options for toileting. Please enquire for install costs, we can quote and install any system of your choice.

Heating

Quotations for heat pumps are available upon request. Please confirm before build starts to ensure pipework can be installed into the walls. There are heatpumps available for on grid and off grid use, please ask for questions. Fireplaces of any kind can be installed after delivery at your location by your local gas fitter, we're happy to recommend options.



* Upgrades, changes or customisations will affect cost of the unit.

FEATURES

Connections

All models include an easy 3 pin caravan plug connection point for a mains power supply or solar system hook up. 2x fresh water inlets to connect either end of the unit. All homes feature a continuous flow gas califont, 2 x double exterior power socket for filters and pumps, monoxide detector and smoke alarm.

Transportation

We deal with numerous transport companies across the country who offer secure, insured delivery. Costs depend on the route taken, distance travelled and site accessibility. Please contact us for transportation referrals.

Warranty

All Ruru Tiny Homes are built with code compliant materials, all warranties of products will be transferred to the new owner on handover. Ruru Tiny Homes also come with a 3 year warranty on workmanship.

Certification

An electrical warrant of fitness and gas certification will be provided upon completion of your build.

New Zealand made

All Ruru Tiny Homes are created completely on site. Using building materials predominantly NZ Made. We focus on working with local contractors and local suppliers.



THE TOROA XL LAYOUT

**DOUBLE-STOREY, THREE-BEDROOM
TINY HOME ON WHEELS.**

NZD \$239,000



Size

On a 12x3m platform, the Toroa XL boasts 60m² floorspace.

Rooms

The double storey Toroa XL features three bedrooms or 2 bedrooms + extra space, your choice of dining & kitchen layout (see plans below) and a large bathroom with ample storage space.

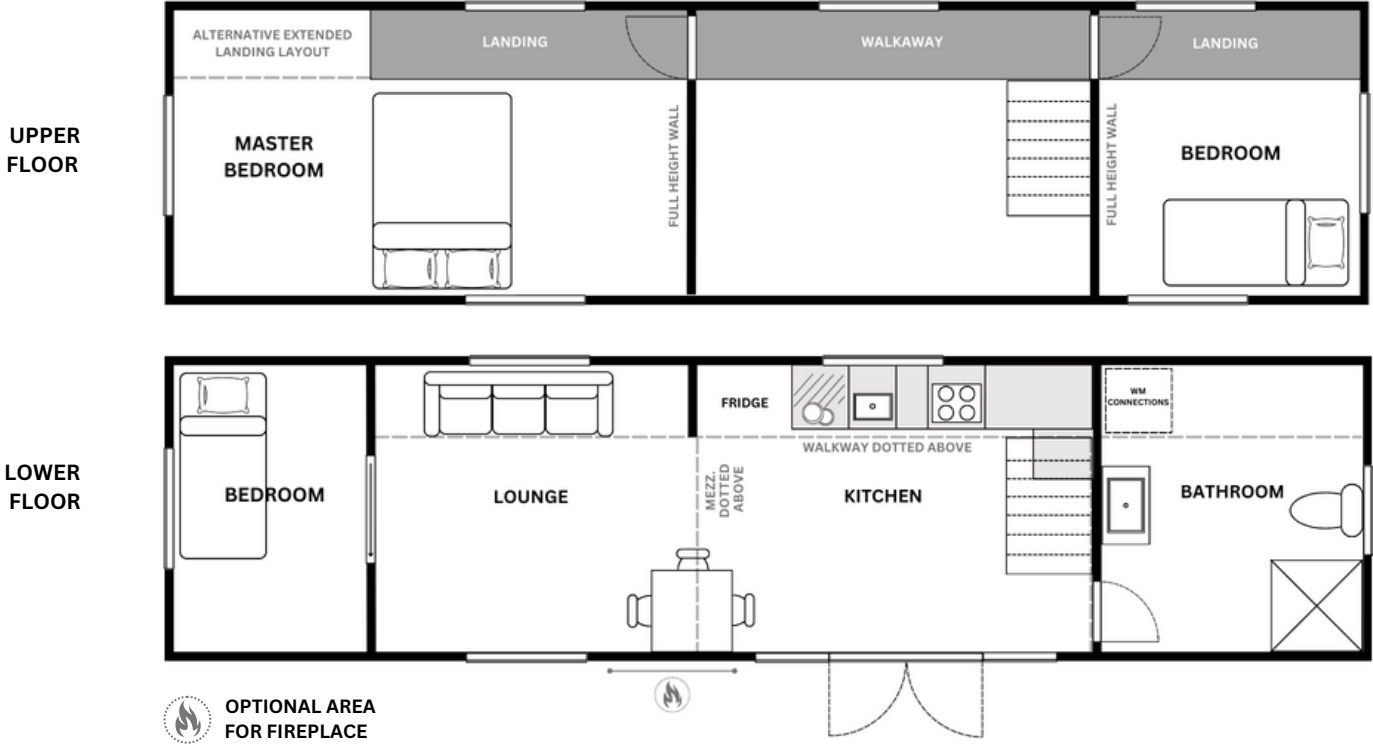
THERE ARE FOUR ALTERNATIVE LAYOUTS FOR THE TOROA XL.



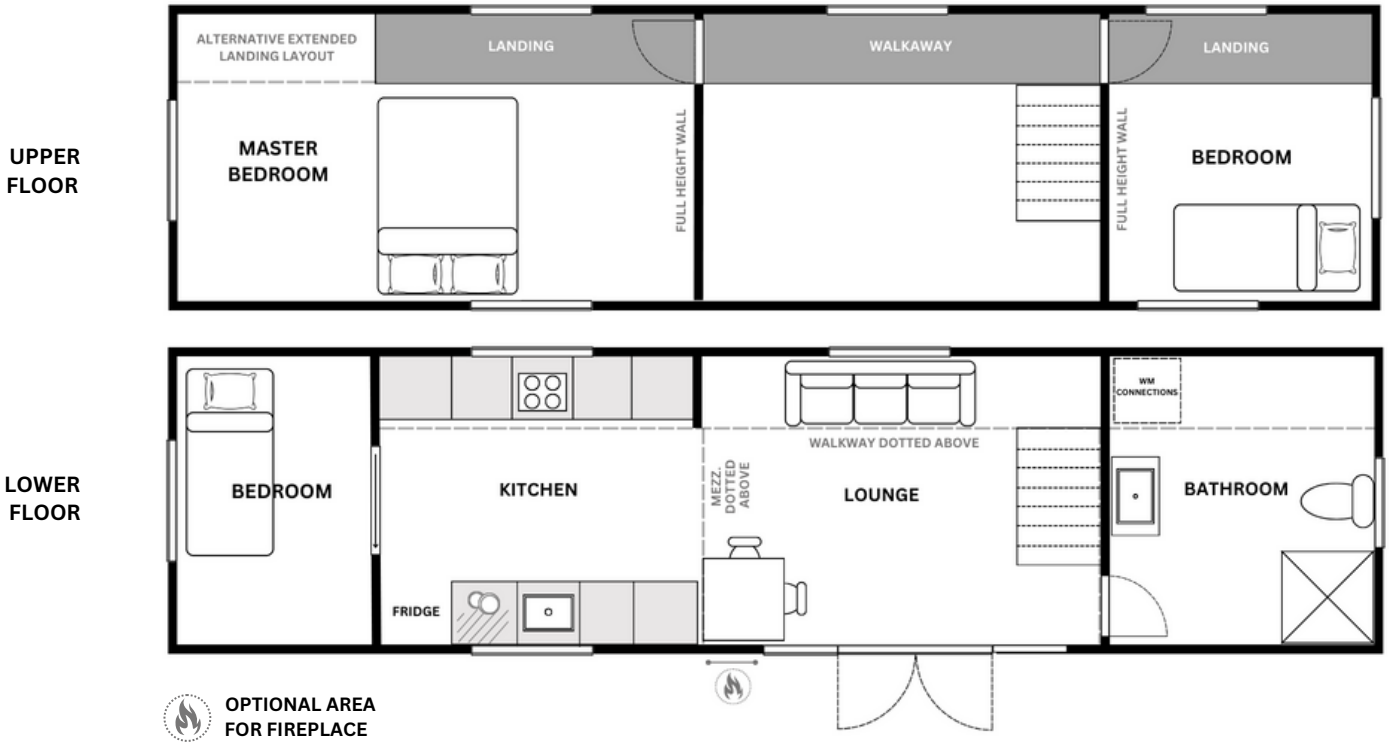
**Unit is independently valued at \$250,000
Valuation provided by "Auto Valuations NZ"*

THE TOROA XL - LAYOUTS

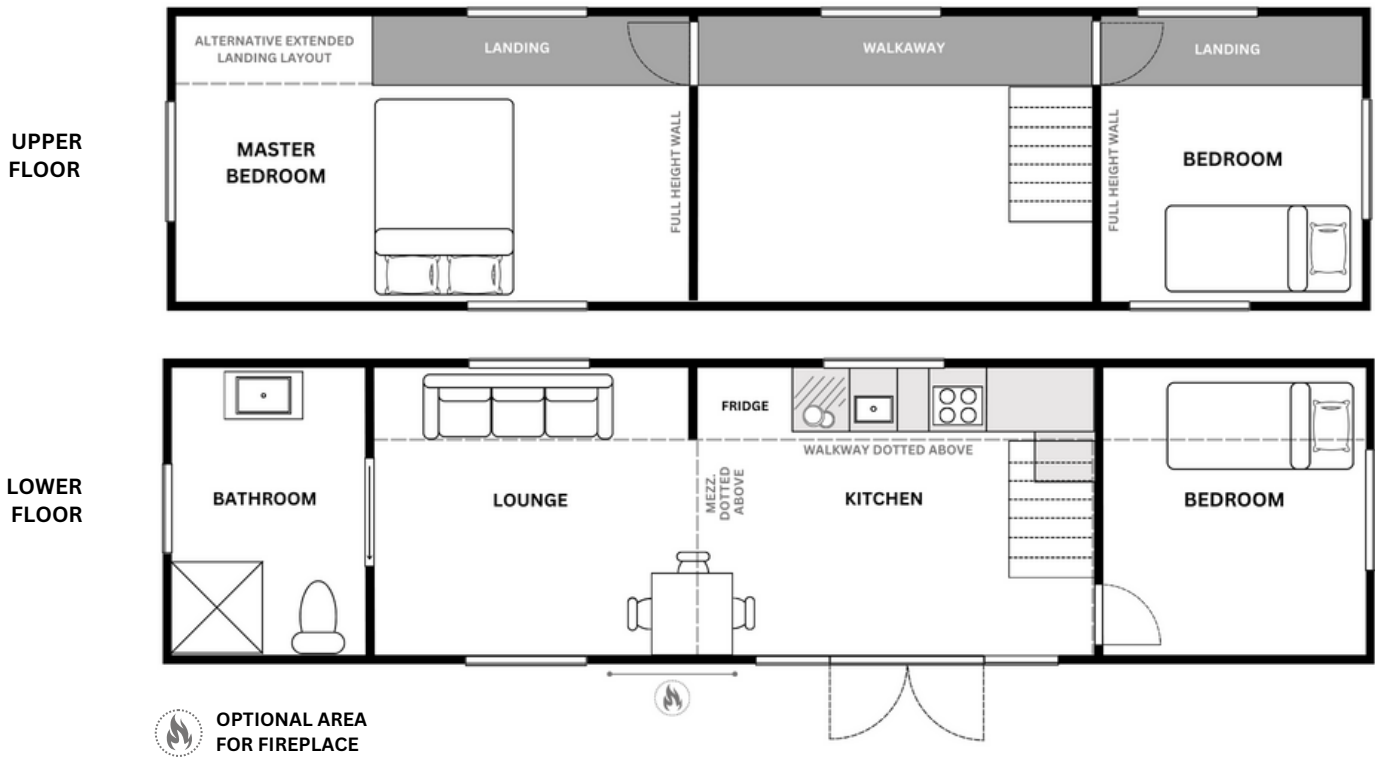
LAYOUT 1: BEDROOM - LOUNGE - KITCHEN - BATHROOM



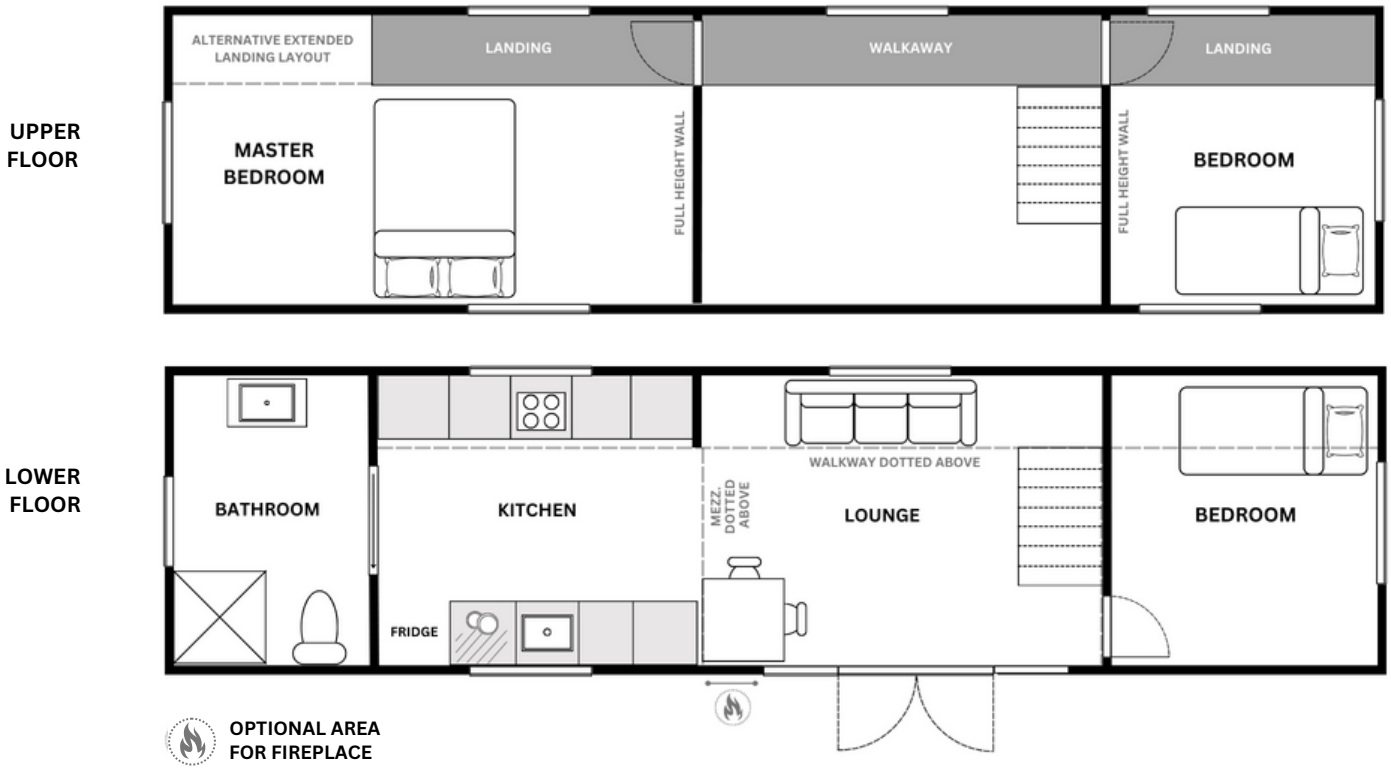
LAYOUT 2: BEDROOM - KITCHEN - LOUNGE - BATHROOM



LAYOUT 3: BATHROOM - LOUNGE - KITCHEN - BEDROOM



LAYOUT 4: BATHROOM - KITCHEN - LOUNGE - BEDROOM



THE TOROA LAYOUT

**DOUBLE-STOREY, TWO-BEDROOM
TINY HOME ON WHEELS.**

NZD \$215,000



Size

On a 10x3m platform, the Toroa boasts 49.5m² floor space.

Rooms

This double storey home features two bedrooms, an open plan lounge dining kitchen area and a spacious bathroom.

THERE ARE TWO ALTERNATIVE LAYOUTS FOR THE TOROA.

• Centre kitchen Layout

Standard

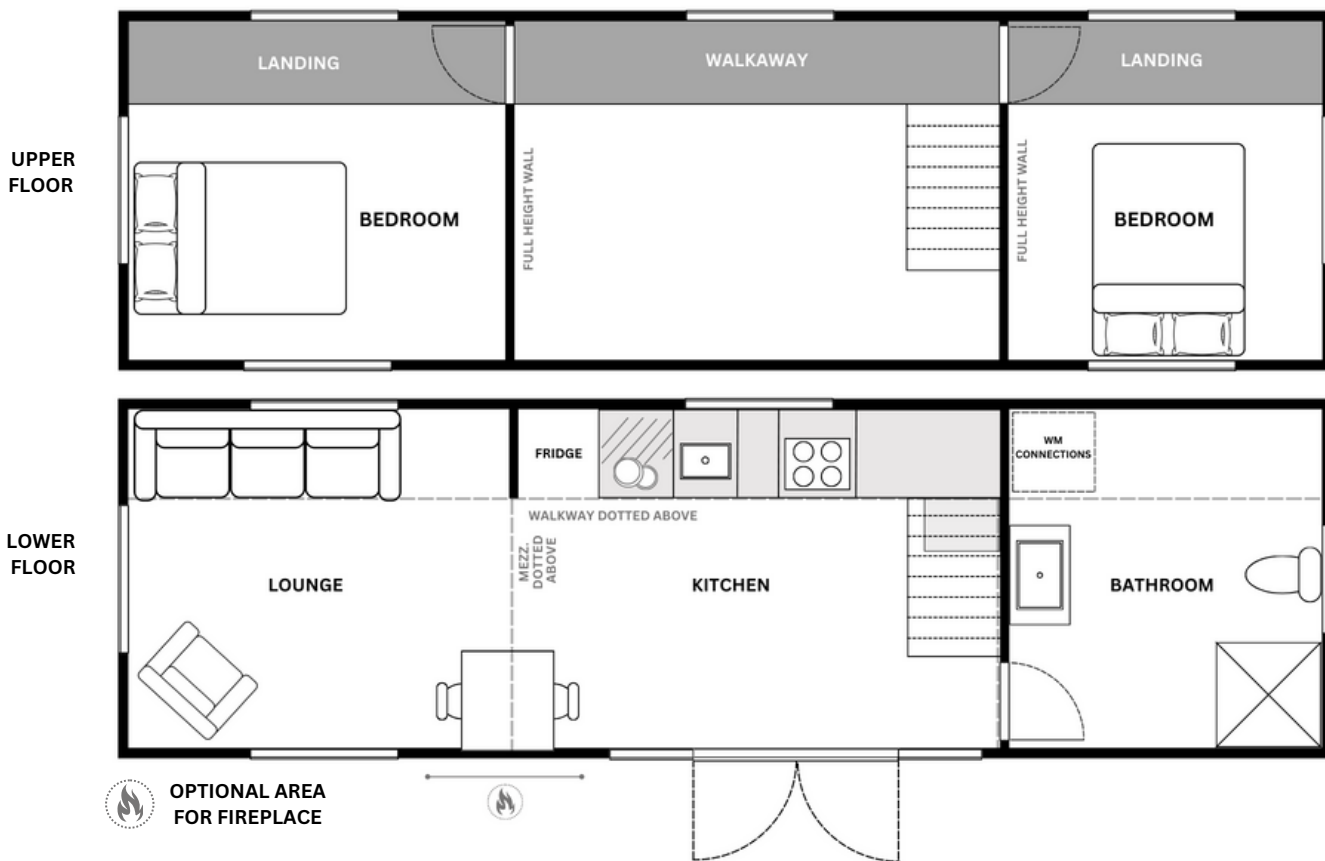


• U-shaped kitchen Layout

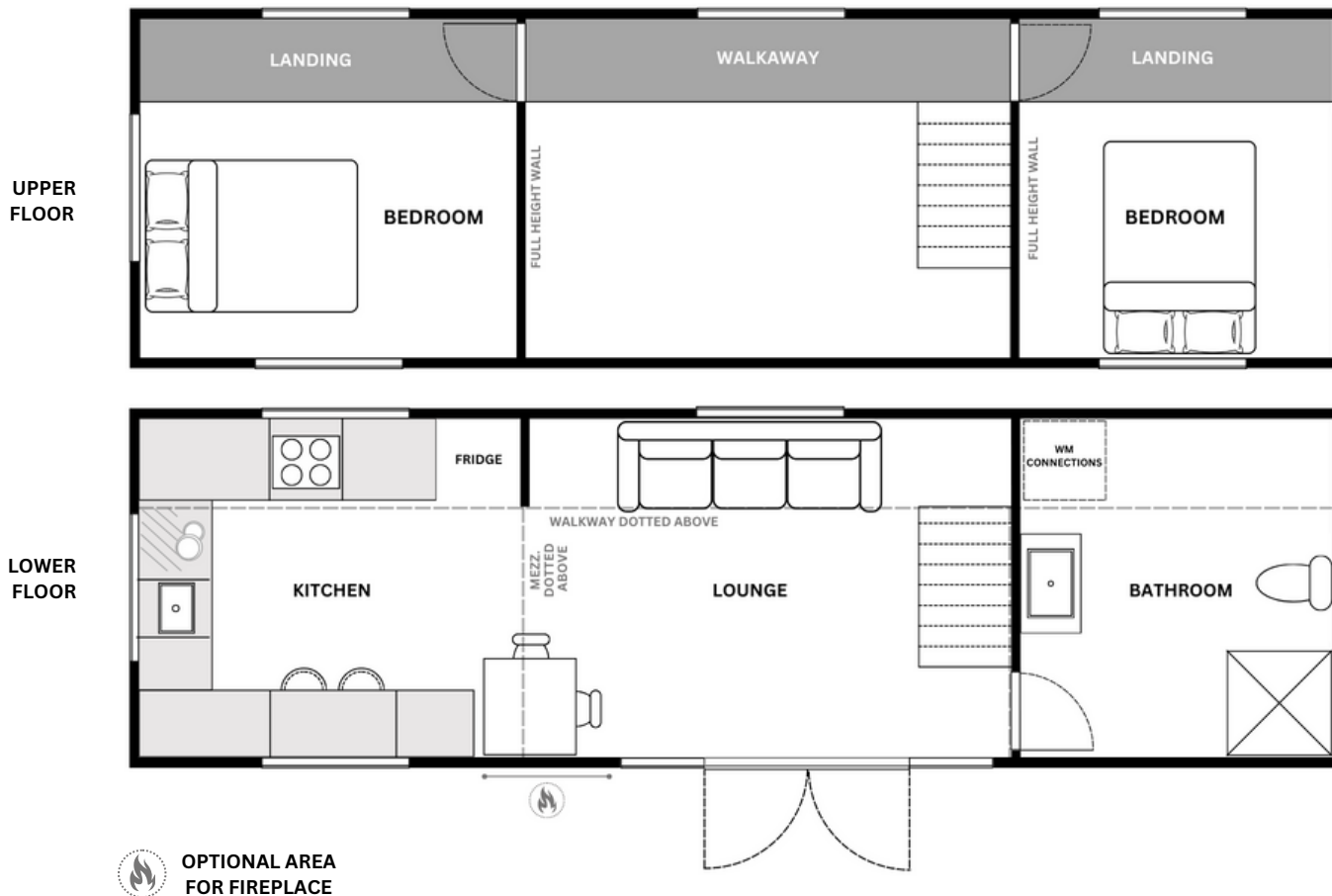
Upgrade +\$4,082



CENTRE KITCHEN LAYOUT



U-SHAPED KITCHEN LAYOUT



THE TOROA XS LAYOUT

DOUBLE-STOREY, TWO-BEDROOM
TINY HOME ON WHEELS.

NZD \$167,000

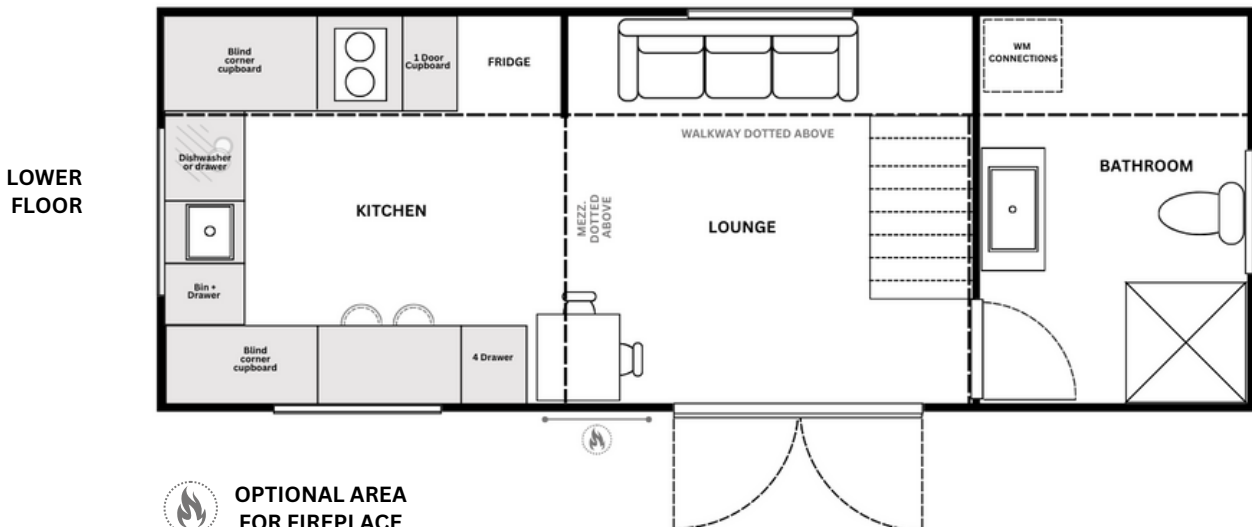
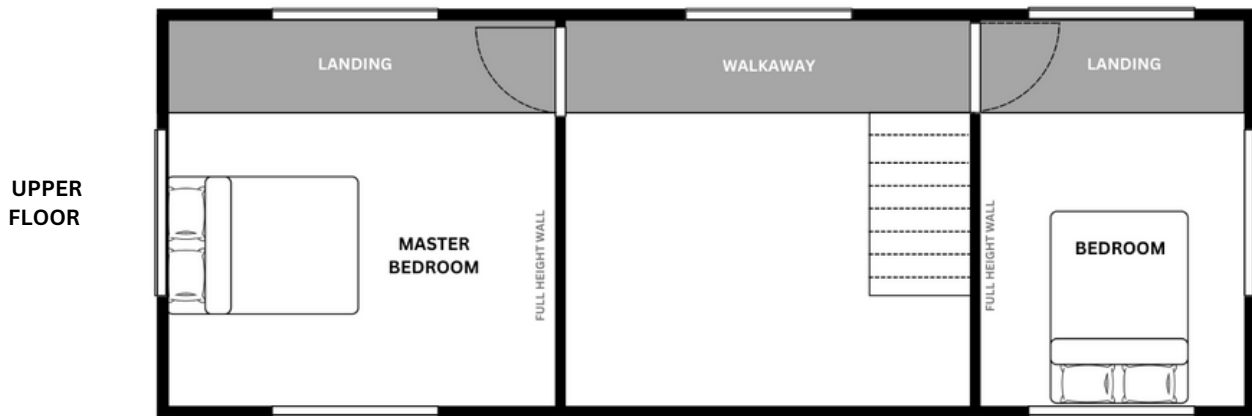


Size

On an 8x3m platform, the Toroa XS boasts 39m² floor space.

Rooms

This double storey home offers two bedrooms, a bathroom, a U-shaped kitchen, a cosy central living area, and French doors for indoor-outdoor flow.



 **OPTIONAL AREA
FOR FIREPLACE**

THE KĀKĀ LAYOUT

DOUBLE-STOREY, TWO-BEDROOM
TINY HOME ON WHEELS.

NZD \$215,000 / NZD \$223,000

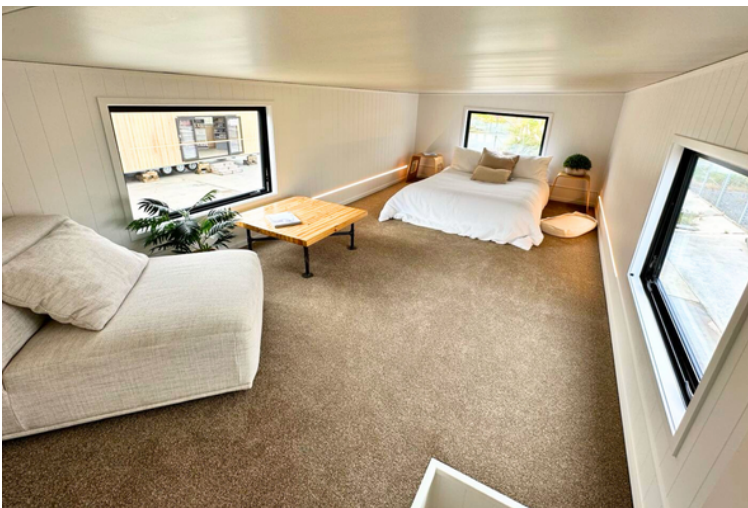


Size

This home has two size options: 10x3m/43.5m² or 12x3m/50m². Additionally, the kitchen location can be under the stairs or at the end of the wall, based on your preference.

Rooms

This home features one downstairs bedroom, a spacious upstairs mezzanine, a wide hallway, a bathroom with a sliding door, and a massive lounge-kitchen area.



THE KĀKĀ 10X3M/43.5M2 - KITCHEN AT THE END OF THE WALL LAYOUT



THE KĀKĀ 12X3M/50M2 - KITCHEN UNDER THE STAIRS LAYOUT



THE KIWI LAYOUT

SINGLE-STOREY, ONE-BEDROOM
TINY HOME ON WHEELS.

NZD \$193,000

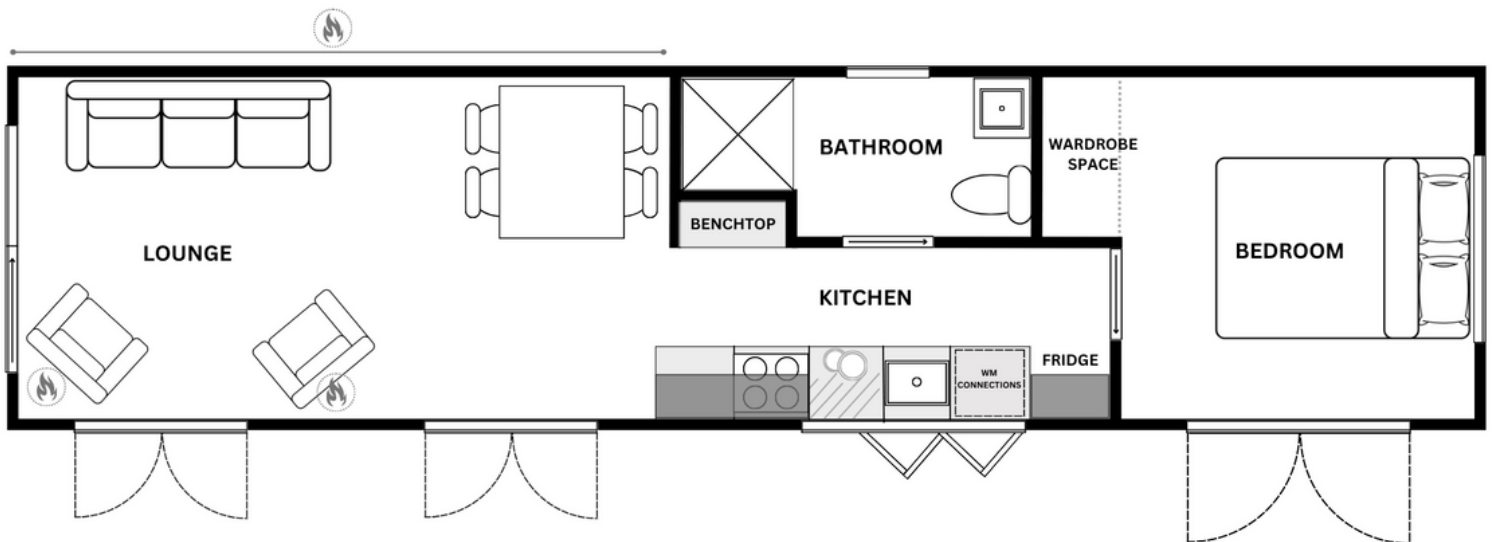


Size

On a 12x3m platform, the Kiwi boasts 36m² floor space.

Rooms

Featuring a master bedroom, galley kitchen with bifold window, bathroom and a sizeable open-plan living area.



OVERHEAD
CABINETRY

OPTIONAL AREA
FOR FIREPLACE

THE LITTLE RURU LAYOUT

**SINGLE-STOREY, ONE-BEDROOM
TINY HOME ON WHEELS.**



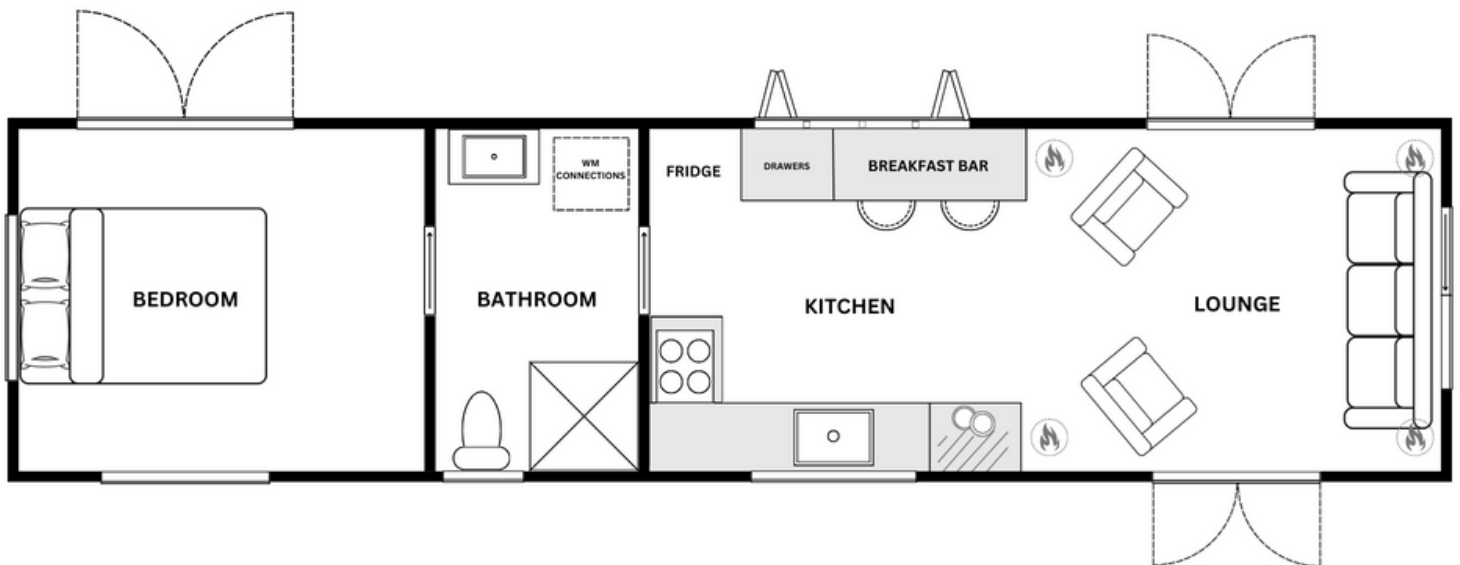
NZD \$193,000

Size

On a 12x3m platform, the Little Ruru boasts 36m² floor space.

Rooms

Incorporates a highly spacious communal living area and kitchen that feels both expansive and comfortable. It features a full size walk through bathroom and sizeable bedroom.



 **OPTIONAL AREA
FOR FIREPLACE**

*Unit is independently valued at \$190,000
Valuation provided by "Auto Valuations NZ"

THE PIWAKAWAKA LAYOUT

SINGLE-STOREY, ONE-BEDROOM
TINY HOME ON WHEELS.



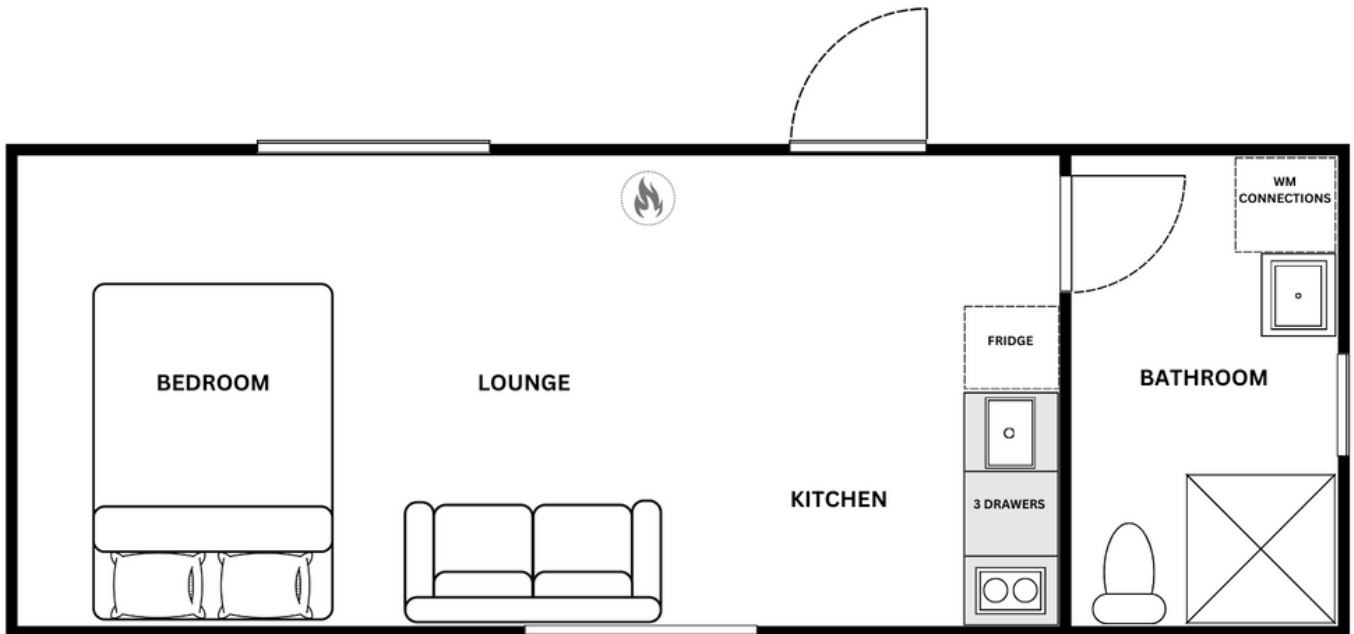
NZD \$143,000

Size

On a 8x3m platform, the Piwakawaka boasts 24m² floor space.

Rooms

Featuring an open-plan layout with separate bathroom, maximising space with a smaller footprint.



OPTIONAL AREA
FOR FIREPLACE

CLIENT JOURNEY

INTRODUCTION

Take a look around our website and consider any questions you may have. Book a viewing, to check out our tiny home designs. We offer one on one consultations so we can answer all your questions and focus on your tiny home needs.

COMMITMENT

Once you've joined the Ruru family, we get together and go over all the paperwork. We determine your tiny home specifications and customisation preferences. Then we will sign the contracts and once the deposit is paid, your unit is underway!

DESIGN + BUILD

During the build, we provide clients with weekly updates of their building progress. Visits are available by appointment. The client liaison team is available all week for questions, orders, extras or simply to catch up over a cuppa.

BUILD + FINISH

During the build you will receive visual updates on each stage of your tiny's progress. From framing to fit-out and finishing. After the approximate 9 week build, and post-build professional clean, clients come in for an official handover.

DELIVERY

Delivery to site is scheduled through a third party transport company. Our team can liaise with your chosen transport provider and will assist with loading your home at our worksite.

AFTERCARE

Your Ruru journey does not end with the delivery. You will receive an aftercare manual with all your paperwork, warranties and certifications. Once your home is on site the team at Ruru Tiny Homes are only a phone call away.



WHANGĀREI

ruru
tiny homes

MOTUEKA

LET'S GET IN TOUCH

Please don't hesitate to call or email us whenever you need assistance.
Your team at Ruru Tiny Homes is always available for you!

021 190 4155

hello@rurutinyhomes.nz

Whangārei: 112-114 Port Road (Access off Fertilizer Road) Port Whangārei.

Motueka: 54 Green Lane.

WWW.RURUTINYHOMES.NZ