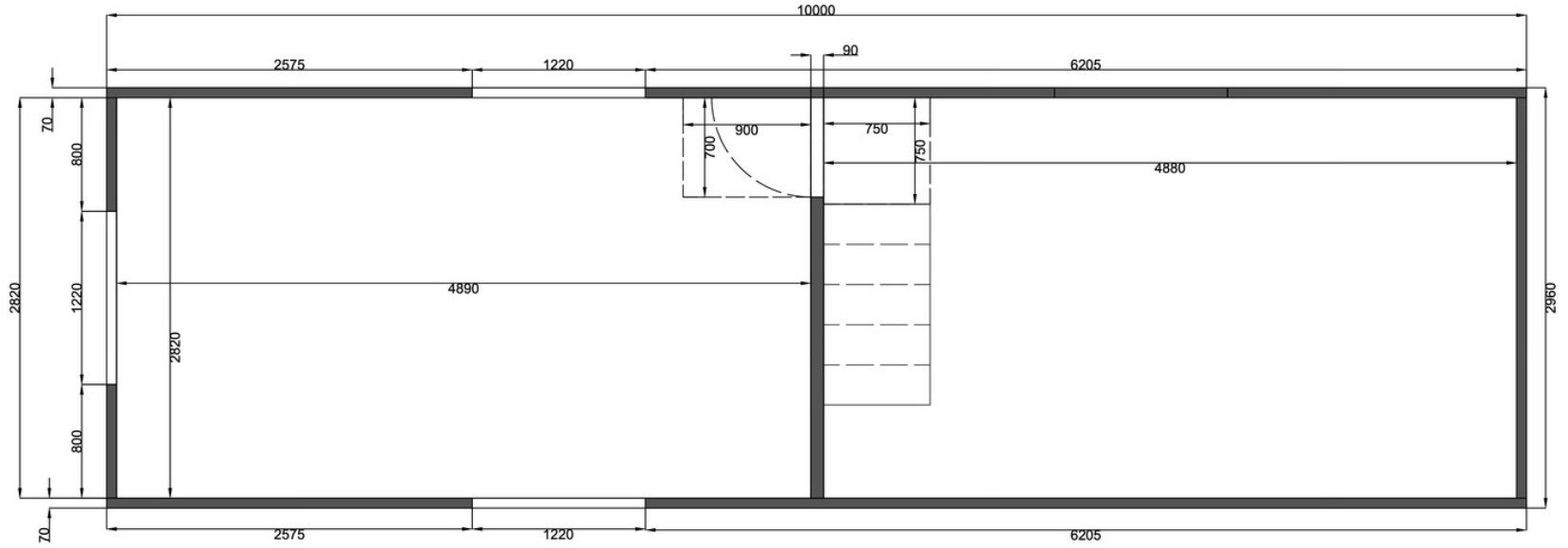
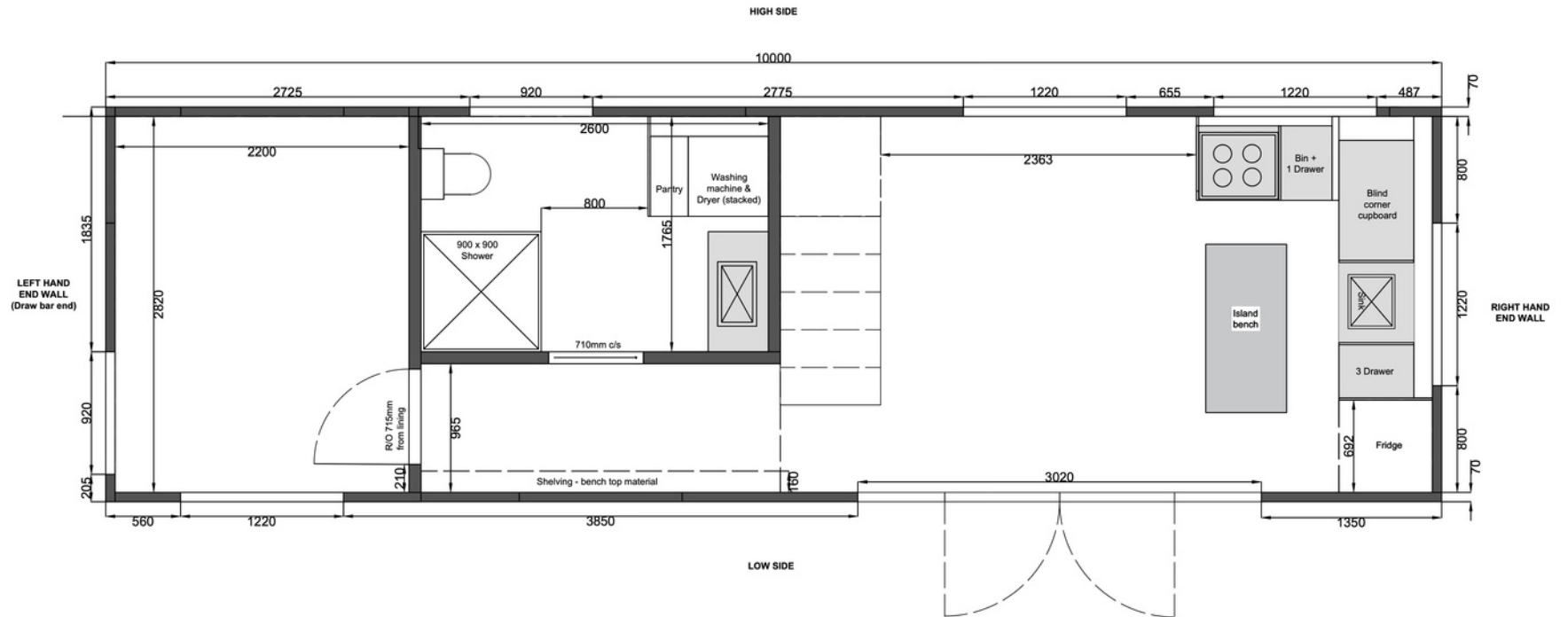


The Kākā 10x3m/43.5m<sup>2</sup> - Upper Floor Plan

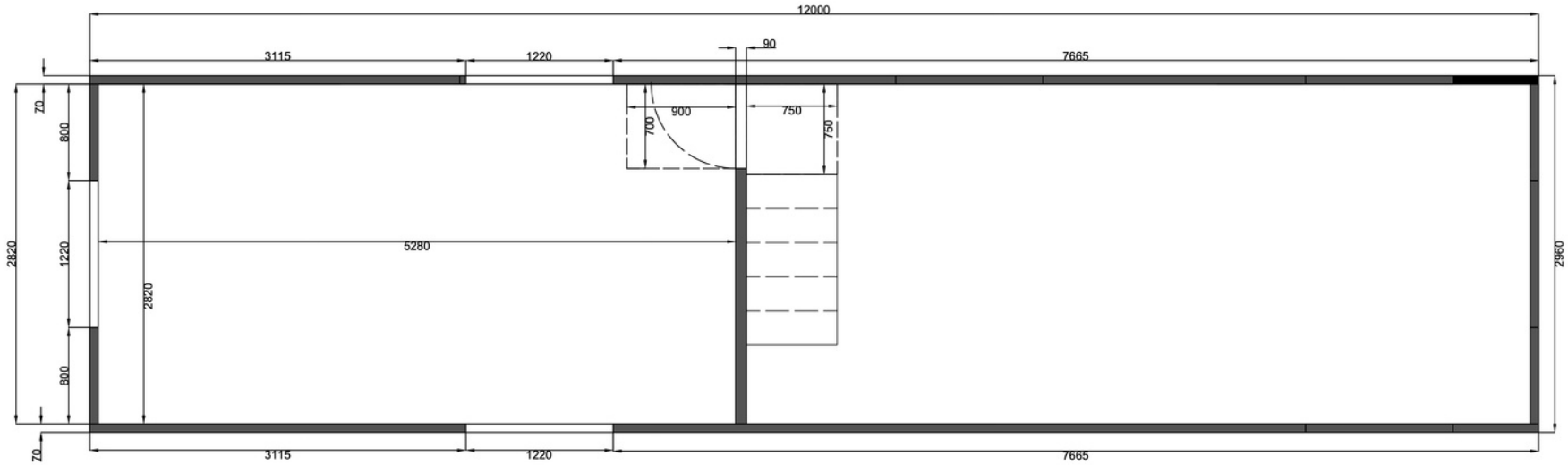


The Kākā 10x3m/43.5m<sup>2</sup> - Lower Floor Plan

Kitchen at the end of the wall layout



The Kākā 12x3m/50m<sup>2</sup> - Upper Floor Plan



The Kākā 12x3m/50m<sup>2</sup> - Lower Floor Plan

Kitchen under the stairs layout

